

PAVING THE WAY.

BOMAG BMF 2500 FEEDER.



EFFICIENCY AND RELIABILITY COMBINED: BMF 2500.

CONTROLLED MATERIAL FLOW

By means of the conveyor belt sensor, which is fitted as standard, paving material reaches the hopper smoothly.

HIGH MATERIAL FLOW

The conveyor belt has a width of 1.2 metres and can deliver 4,000 tonnes of material per hour.

DEPENDABLE PERFORMANCE

The chain-reinforced conveyor belt guarantees long service life and low operating costs.

MAXIMUM FLEXIBILITY

The optional slewable conveyor belt can be assembled in less than two hours.



MAXIMUM EASE OF USE

The individually adjustable workplace creates a comfortable environment for the operator.

LARGER HOPPER

The large material hopper has a capacity of 15 tonnes and provides ample reserves when changing lorries.



SIMPLE AND EFFICIENT OPERATION

Automatic distance control as standard ensures safe operation.



Reliability: the chain-reinforced conveyor belt.



Easy: the 45° slewing angle.

ANOTHER BOMAG ADVANTAGE: PROFITABILITY.

DOES A LOT, SAVES A LOT.

The BMF 2500 is a feeder which optimises material delivery in a safe, efficient and reliable manner. With exceptionally high output, the unit can convey a 27 tonne lorry load of crushed rock, sand or asphalt in only 35 seconds. This saves time and operating costs.

■ LONG CONVEYOR BELT SERVICE LIFE

The chain-reinforced conveyor belt guarantees reliable operation with no downtime. No need to re-tension during operation and the unit is temperature-independent. The roller chain ensures reliable feed of material at a high output of 4,000 tonnes per hour.

■ EVERYTHING IN EASY REACH

Due to the 45° slewing angle, lateral feeding is readily possible.

■ MAXIMUM FLEXIBILITY

The conveyor belt, which can be changed quickly, makes the machine ready for all types of work on site. High convenience: Quick release couplings to assemble the slewable conveyor belt without tools.

■ SCRAPERS

Robust scrapers clean the conveyor belt thoroughly. The split design enables the whole width of the conveyor belt to be cleaned.

■ BELT VERSIONS

The belts are available in three versions:

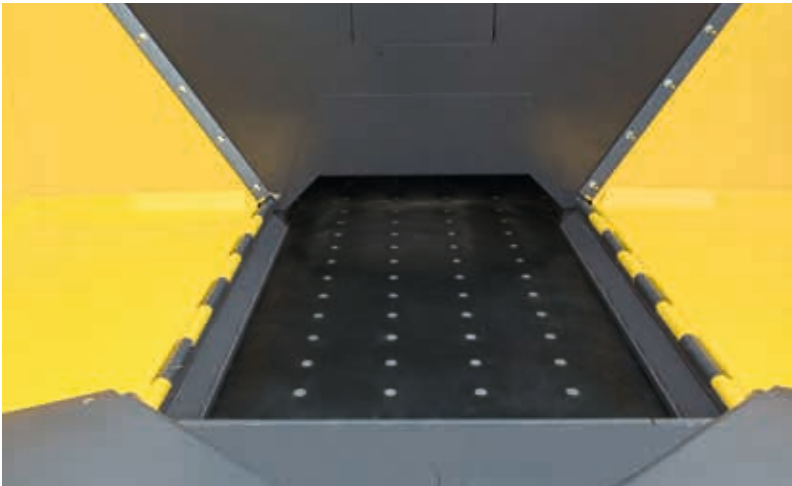
1. BMF 2500 S with a short belt
2. BMF 2500 S with a medium-length belt
3. BMF 2500 S Offset with slewable conveyor belt for the short version



Speed: the conveyor belt can be changed fast thanks to quick release couplings.



Robust: the wide scrapers.



Versatile: Belts available in three versions.

ANOTHER BOMAG ADVANTAGE: THE OPERATOR'S PLATFORM.

BETTER VISIBILITY, MORE PROTECTION, MORE SAFETY.

Convenience, ergonomics and usability, are outstanding characteristics of the operator's platform on the BMF 2500. The result of a design concept, which safely and reliably meets and surpasses all the requirements of a modern feeder.

■ THE LIFT PLATFORM

Gives optimum visibility in all directions, to the front when unloading delivery trucks and to the back when loading the paver hopper. This is especially useful when using the slewable conveyor belt.

■ ADJUSTABLE WORK PLACE

Highly beneficial to the operator: Seat and operating console can be swivelled 90° in the travel direction.

■ WINDSCREEN AND SIDE WINDOWS

To protect from bad weather, the operator's platform can be equipped with a windscreen and side windows.

■ TRANSPORT

To load the machine for transport, the frame can be raised at the front to a ramp angle of 10°. The roof can be moved into transport position using a hydraulic pump.



Optimum visibility: the lift platform.





Easy loading: frame can be raised and roof can be lowered.



Perfect protection: windscreen and side windows.



Comfortable: rotatable seat with control panel.



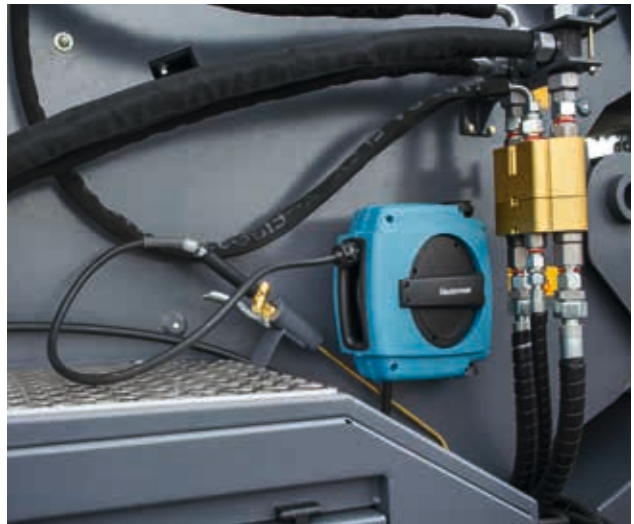
Automated material flow: the filling level sensor.



Synchronised speed: the distance sensor.



Cleaning at the push of a button: the belt cleaning system.



For easy cleaning: the hose reel with couplings.



More convenience: laptop station and storage compartments.



Better communication: the optional signal lamp system.

ANOTHER BOMAG ADVANTAGE: THE OPERATING CONCEPT.

HARD WORK MADE EASY.

The BMF 2500 is operated very easily. A range of useful features make daily work on different sites so much easier.

■ THE FILLING LEVEL SENSOR

For automated material flow always giving the right quantity of mix in the hopper.

■ THE DISTANCE SENSOR

Maintains a constant distance to the paver, by synchronising the speeds of both paver and feeder. For accurate loading.

■ THE BELT CLEANING SYSTEM

At a push of a button, the system sprays the belt with releasing agent, while the belt slowly rotates.

■ THE HOSE REEL

With the hose reel and four hose couplings around the machine, all feeder components can be easily cleaned manually.

■ THE LAPTOP STATION

The laptop station and generous storage compartments increase convenience and make day-to-day work easier.

■ THE SIGNAL LAMP SYSTEM (optional)

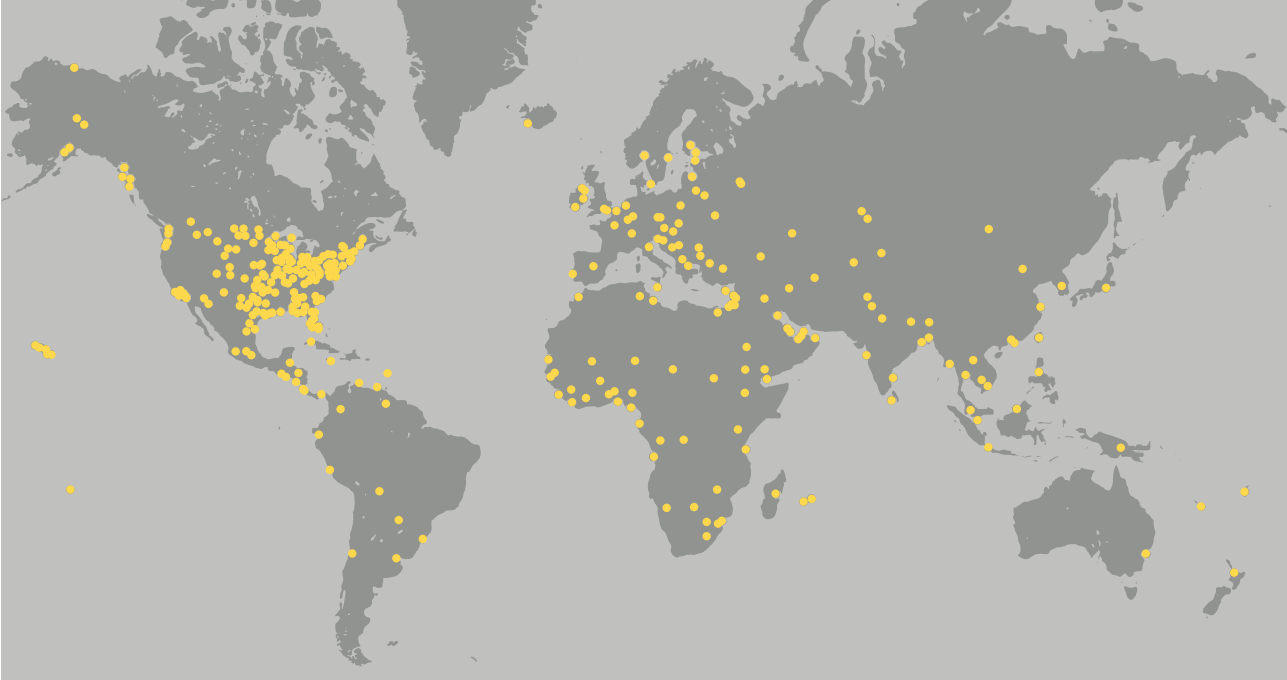
For communication with the lorry driver, for example on night construction work.

■ LED LIGHTING (optional)

The LED lighting on roof and conveyor belt turn night into day on site.



Clear view: the optional LED lighting.



MAINTENANCE AND SERVICE.

ALL-ROUND SERVICE ALL OVER THE WORLD.

With every BMF 2500, you enjoy superior technology, plus also top notch service.

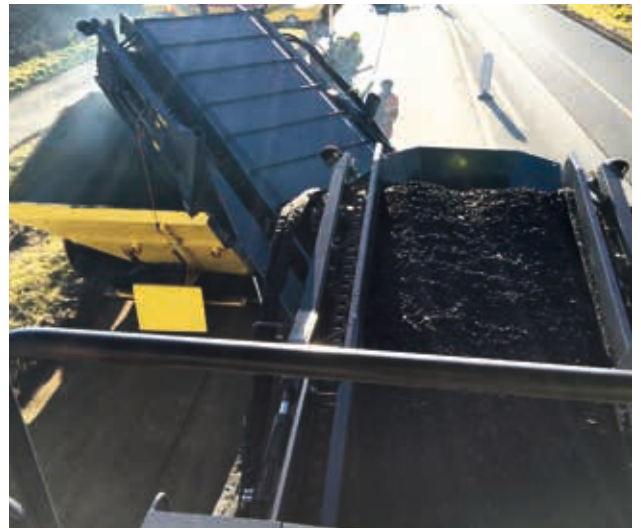
Our service concept has a clear objective: less maintenance, less downtime, lower costs. So unnecessary maintenance points have been removed from the BMF 2500 and necessary points have been made more accessible. Regardless of where your machine is operating: We are there when you need us. We are your reliable global partner, with 12 subsidiaries abroad and over 500 dealers in more than 120 countries. Central BOMAG logistics guarantees a high and speedy availability of original parts.



Easily done: the maintenance access.



Fast and experienced: our service on site.



ON SITE.

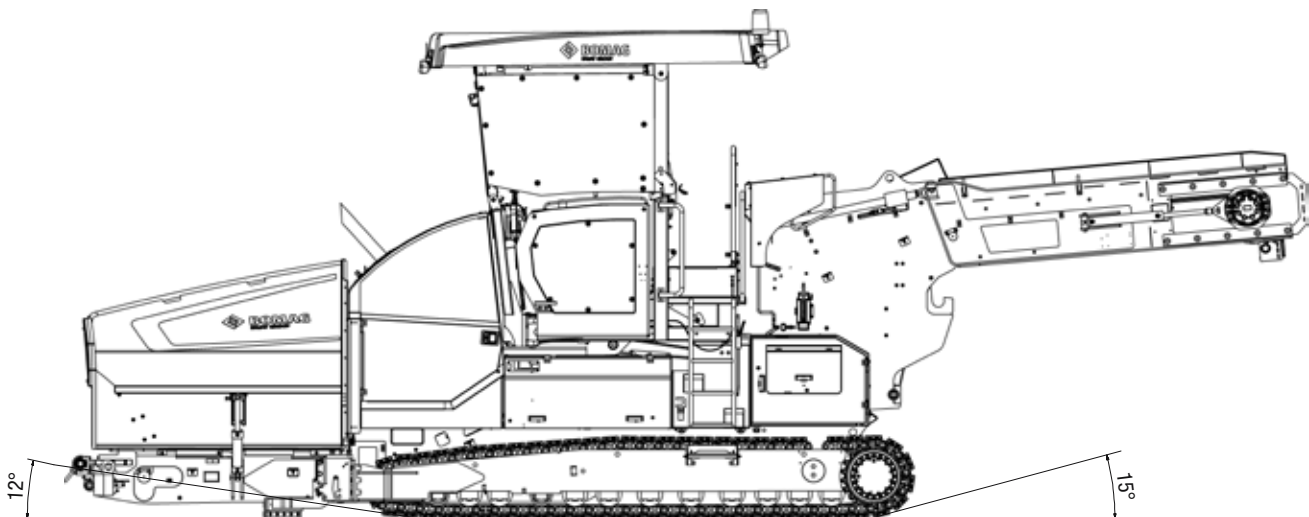
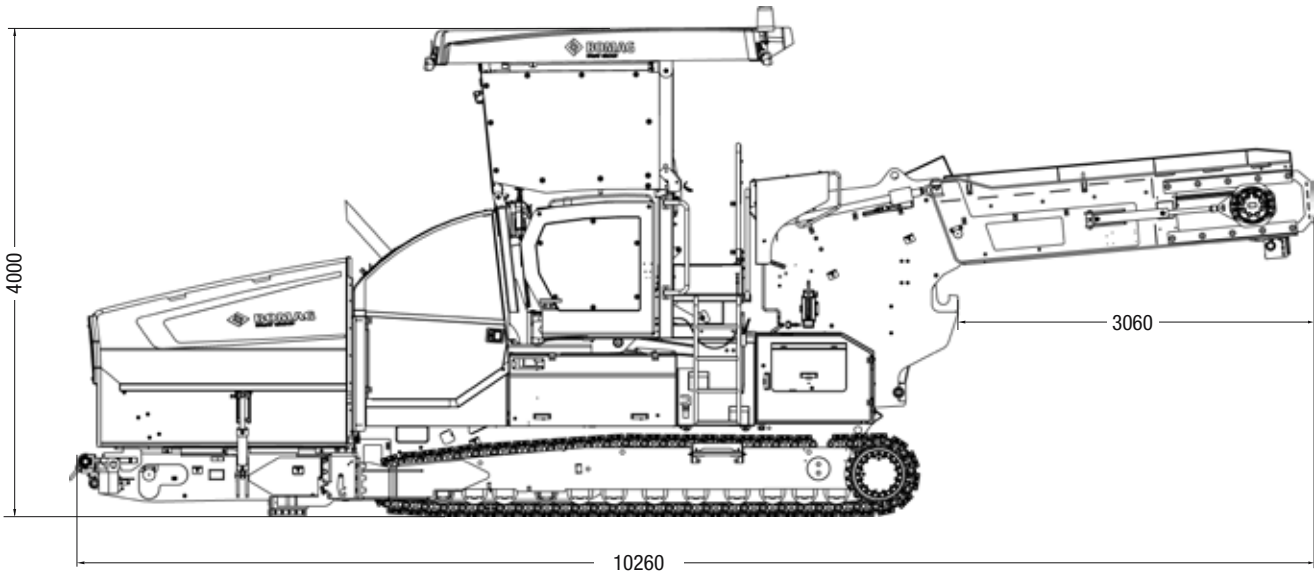
IN ACTION: BOMAG BMF 2500.

Wherever it is wanted: The BMF 2500 handles every job reliably and accurately. Thanks to the slewing conveyor belt, lateral feeding is no problem.

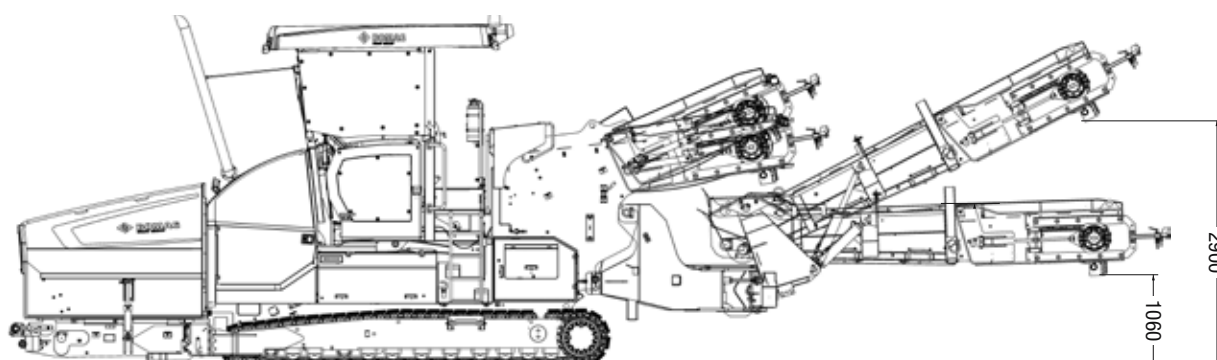
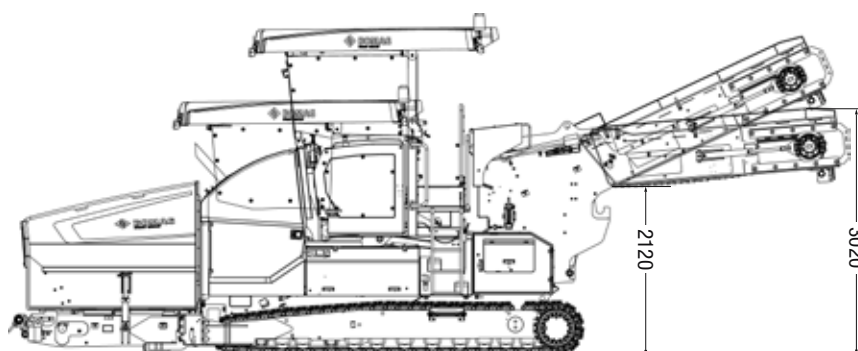
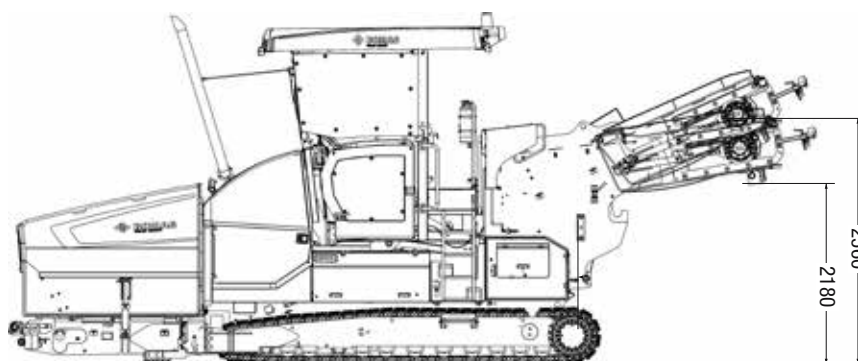
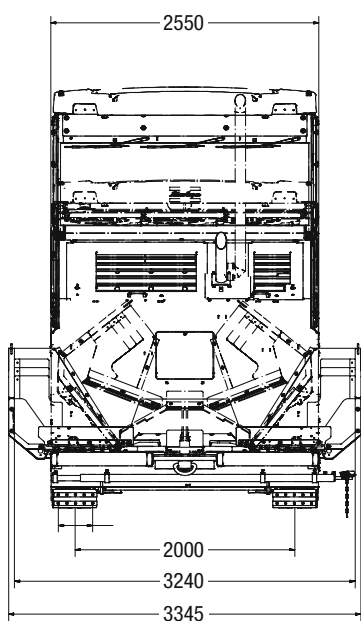


MODEL OVERVIEW. THREE POWERFUL FEEDERS.

MAIN FEATURES	Engine power @ 2200 min ⁻¹	Theoretical asphalt capacity	Transport width	Transport length
BMF 2500 S	170 kW	4,000 t/h	2.55 m	9.2 m
BMF 2500 M	170 kW	4,000 t/h	2.55 m	10.2 m
BMF 2500 S OFFSET	170 kW	4,000 t/h	2.55 m	13.0 m



Transport weight	Conveyor belt width	Additional feature: slewing conveyor belt	Maximum conveying height	Available exhaust classifications
20.0 t	1,200 mm	Slewing conveyor belt attachable	2.56 m	Tier 3/Tier 4f
20.5 t	1,200 mm	-	3.02 m	Tier 3/Tier 4f
24.5 t	1,200 mm	conveyor belt detachable	2.9 m	Tier 3/Tier 4f



IN PARTNERSHIP ALONG NEW ROADS.

Decades of experience and expertise with the highest quality standards have made us who we are today: Paving the way in highway construction. With one goal: your success. Which is why we continue delivering

100 percent performance. With a choice of training courses and individual support on site. And with new innovations leading the way to the future. You and BOMAG together: the winning team.





BOMAG

BMP 2500 III

BOMAG
FIRST GROUP

Head Office / Hauptsitz:

BOMAG
Hellerwald
56154 Boppard
GERMANY
Tel. +49 6742 100-0
Fax +49 6742 3090
info@bomag.com

**BOMAG Maschinen-
handels-gesellschaft m.b.H.**

Klausenweg 654
2534 Alland
AUSTRIA
Tel. +43 2258 20202
Fax +43 2258 20202-20
austria@bomag.com

BOMAG MARINI EQUIPAMENTOS LTDA.

Rua Comendador Clemente Cifali, 530
Distrito Industrial Ritter
Cachoeirinha – RS
BRAZIL
ZIP code 94935-225
Tel. +55 51 2125-6677
Fax +55 51 3470-6220
brasil@bomag.com

BOMAG (CANADA), INC.

2233 Argentia Road, East Tower
Suites 302
Mississauga, ON, Canada
L5N 2X7
Tel. +1 800 782 6624
Fax +1 905 361 9962
canada@bomag.com

BOMAG (CHINA)

Compaction Machinery Co. Ltd.
No. 2808 West Huancheng Road
Shanghai Comprehensive
Industrial Zone (Fengxian)
Shanghai 201401
CHINA
Tel. +86 21 33655566
Fax +86 21 33655508
china@bomag.com

**BOMA Equipment
Hong Kong LTD**

Wayson Commercial Building
28 Connaught Road West
Sheung Wan
HONG KONG
Tel. +86-20-8136-1380
Fax +86-20-8136-1062
bomahk@bomag.com

BOMAG France S.A.S.

2, avenue du Général de Gaulle
91170 Viry-Châtillon
FRANCE
Tel. +33 1 69578600
Fax +33 1 69962660
france@bomag.com

BOMAG (GREAT BRITAIN), LTD.

Sheldon Way
Larkfield, Aylesford
Kent ME20 6SE
GREAT BRITAIN
Tel. +44 1622 716611
Fax +44 1622 710233
gb@bomag.com

BOMAG Italia Srl.

Via Roma 50
48011 Alfonsine
ITALY
Tel. +39 0544 864235
Fax +39 0544 864367
italy@bomag.com

FAYAT BOMAG Polska Sp. z o.o.

Ul. Szyszkowa 52
02-285 Warszawa
POLAND
Tel. +48 22 482 04 00
Fax +48 22 482 04 01
poland@bomag.com

FAYAT BOMAG RUS OOO

141400, RF, Moscow region
Khimki, Klayazma block, h. 1-g
RUSSIA
Tel. +7 (495) 287 92 90
Fax +7 (495) 287 92 91
russia@bomag.com

BOMAG GmbH

300 Beach Road
The Concourse, #18-06
Singapore 199555
SINGAPORE
Tel. +65 6 294 1277
Fax +65 6 294 1377
singapore@bomag.com

BOMAG Americas, Inc.

125 Blue Granite Parkway
Ridgeway SC 29130
U.S.A.
Tel. +1 803 3370700
Fax +1 803 3370800
usa@bomag.com