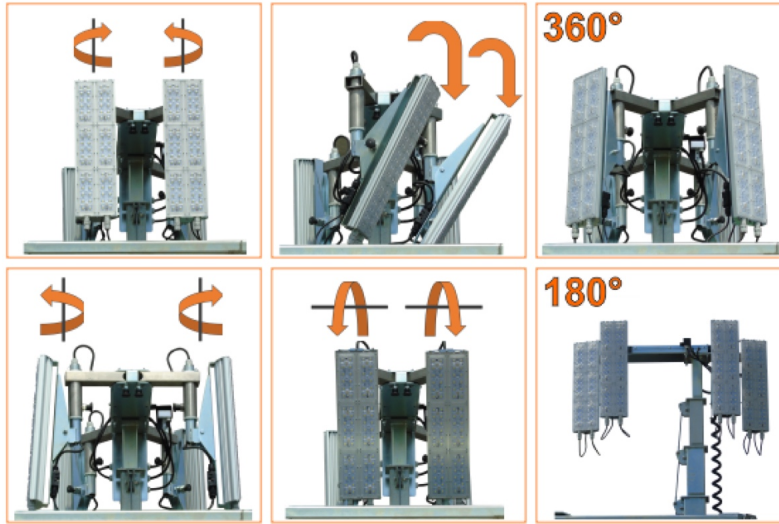


Hydro Power Box 360 Hyper light tower

A very special light tower specifically developed for high risk locations, providing a vandalism-proof solution. The **Hydro Power Box 360 light tower** is devoid of projecting parts and the lighting system and control panel are entirely contained in a locked enclosure inside the machine; therefore, the access to them is limited to authorized people only. Today the LED model is available in the "360" version, that equipped with 4x320W high-efficiency LED floodlights that are possible to adjust in every direction, allowing to illuminate up to 360°. An ideal solution for the illumination of live events.



Picture shown may not reflect actual configuration.

GTL01 digital controller

A **digital controller** specifically studied to manage every function of the light tower for the best ease of use.

High safety solution for events

The safety features such as lockable doors and protection for the emergency stop button, the Hydro Power Box light tower is ideal for illuminating live events like concerts and sport matches, even placed among the public.

Adjustable LED floodlights

The 4x320W LED model has floodlights installed on special adjustable brackets. The floodlights can be pointed in every direction. This allows also to illuminate a 180° or a full 360° area.

Tamper-proof

A unique solution preventing the risk of tampering, since the access to the technical area is lockable.

Stepladder on the two sides

The re-designed stepladder can be placed both on the frontal and the rear side of the machine, allowing the operator an easy and safe way to adjust the floodlights.

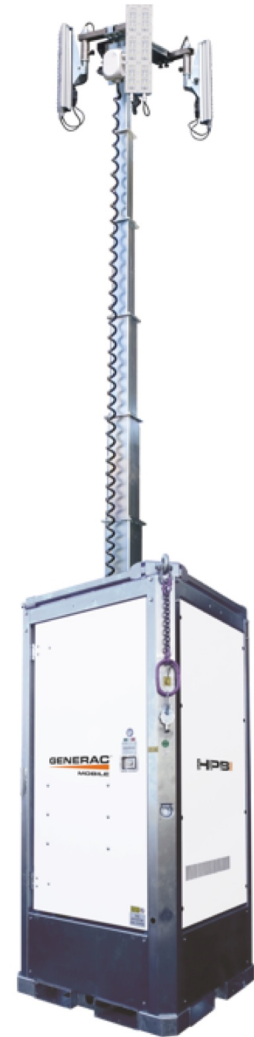
Anti-rust zinc coated structure

The zinc-coated main structure of the Hydro Power Box 360 Hyper has been redesigned to grant even more resistance to wear, rust and vibrations.

Liquid containment tank

A liquid containment tank to avoid any risk of leakages on the ground.

HPB 360 Hyper Y2	Technical Data
Minimum dimensions (L x W x H)	1150 x 1150 x 2500 mm
Maximum dimensions (L x W x H)	1150 x 1150 x 8400 mm
Dry weight	1200 kg
Lifting system	Hydraulic
Mast rotation	0°
Lamps power	4 x 320 W
Lamps type	LED (Hyper)
Total lumen	184000 Lm
Illuminated area	4500 m ²
Engine	Yanmar 2TNV70
Engine cooling	Liquid
Cylinders (q.ty)	2
Engine speed (50/60 Hz)	1500 / 1800 rpm
Liquid containment (110%)	√
Alternator (kVA/V/Hz)	5/220/50 – 5/240/60
Outlet socket (kVA/V/Hz)	2,5/220/50 – 2,5/240/60
Inlet plug (A/V/Hz)	16/220/50 – 16/240/60
Avg. sound pressure	58 dB(A) @ 7m
Wind speed resistance	80 km/h
Tank capacity	265 l
Running time	378 h



Picture shown may not reflect actual configuration.