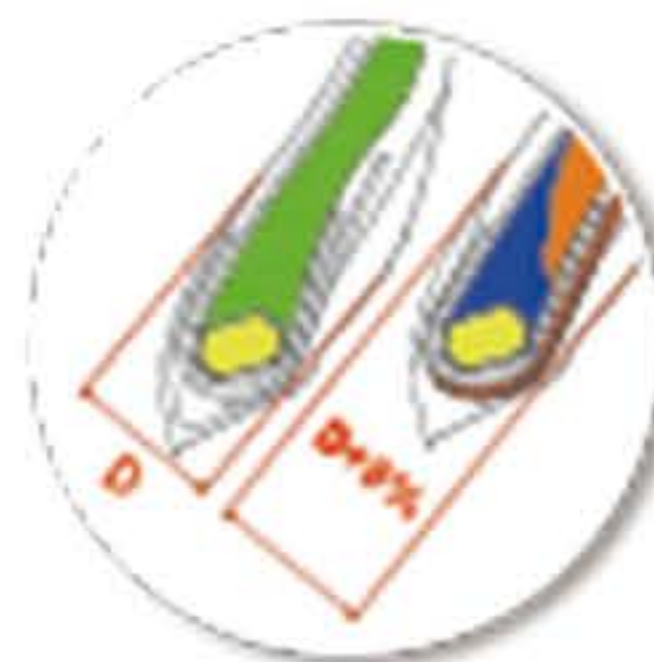


Better traction & wearing resistance performance



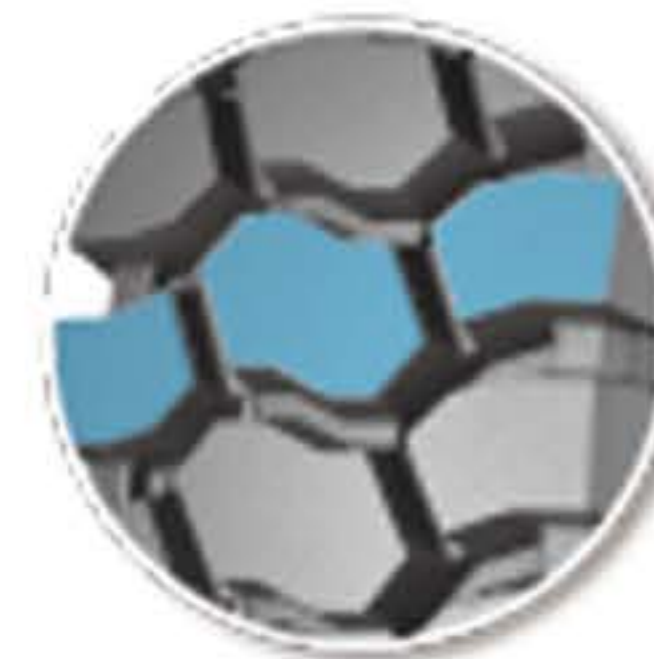
+30% Casing Strength

Ultra high-tensile steel wires reinforces the carcass.



160% Load Capacity

The double-layer nylon chafer reinforces the tire bead and increase the load capacity to 160%.



Longer Service Life

Bigger blocks enhance pattern saturation and prolong tire life.

SUPER ETOT

Size	PR	Tread Depth (mm)	LI & SS	Load Capacity (kg)		Max. Load Capacity (kg)	Standard Pressure (kPa)	Type
				Single	Dual			
13R22.5	18	24	154/150K	3750	3350	3350	830	TL