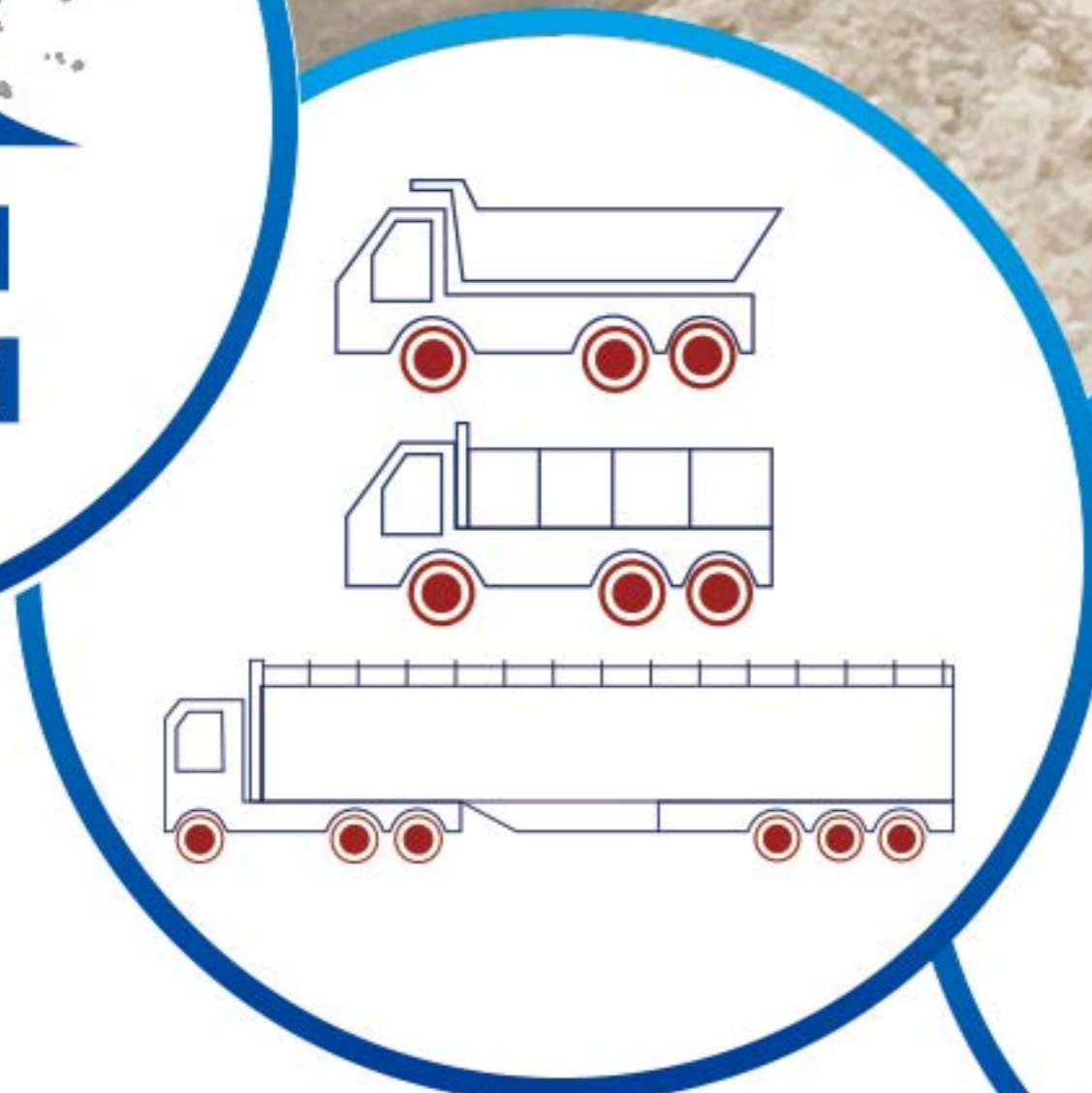


# Wider for Stronger



**TKAM II**



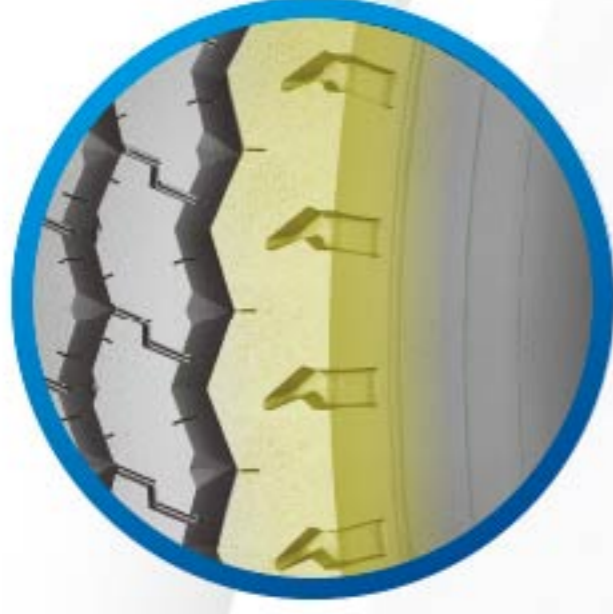
• **Better impact resistance capacity**

High-tensile Steel Wires Design & Thicker Bead Design

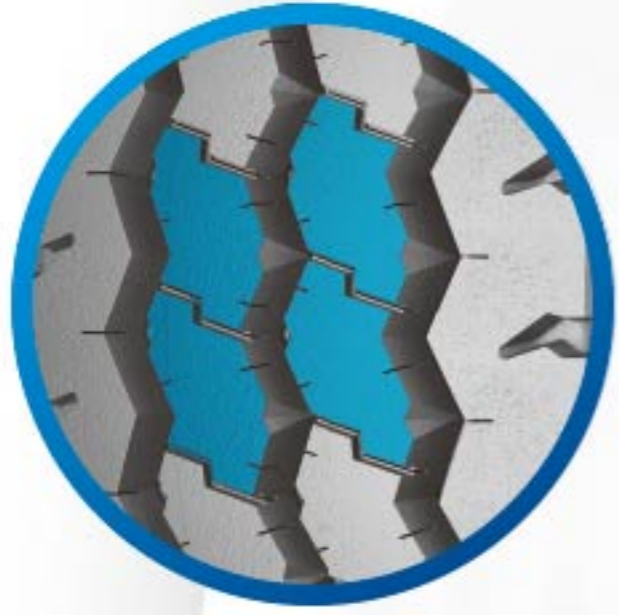


• **Better protection to the bottom of the groove**

Self-cleaning Design



• **Semi-open Shoulder Design for better traction capacity**

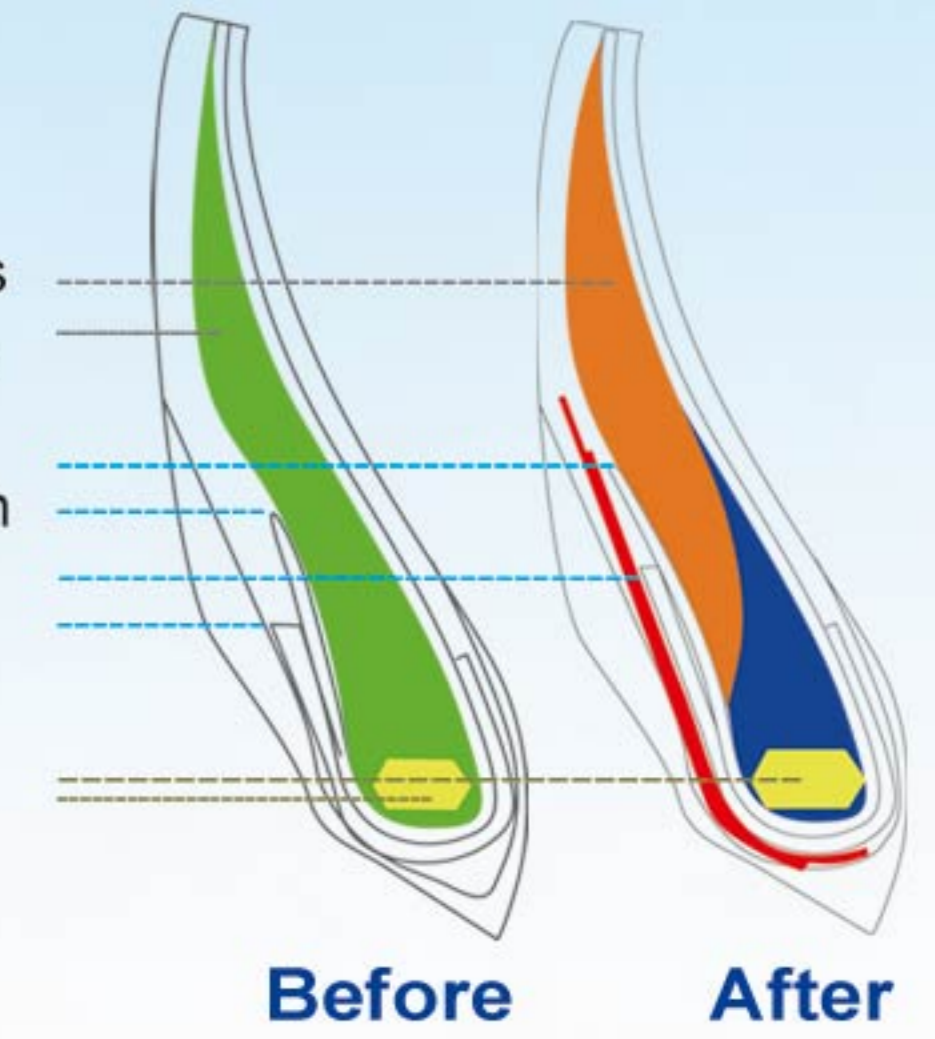


• **Variable Pitch Sequence Design for noise reduction performance**

15% Increasing the thickness of bead section by 15%

Higher turn-up improving strength of the tire bead area.

30% The bead wire number increasing by 30%



Before After

**315/80R22.5 TKAM II**  
**Field Performance from Kenya**



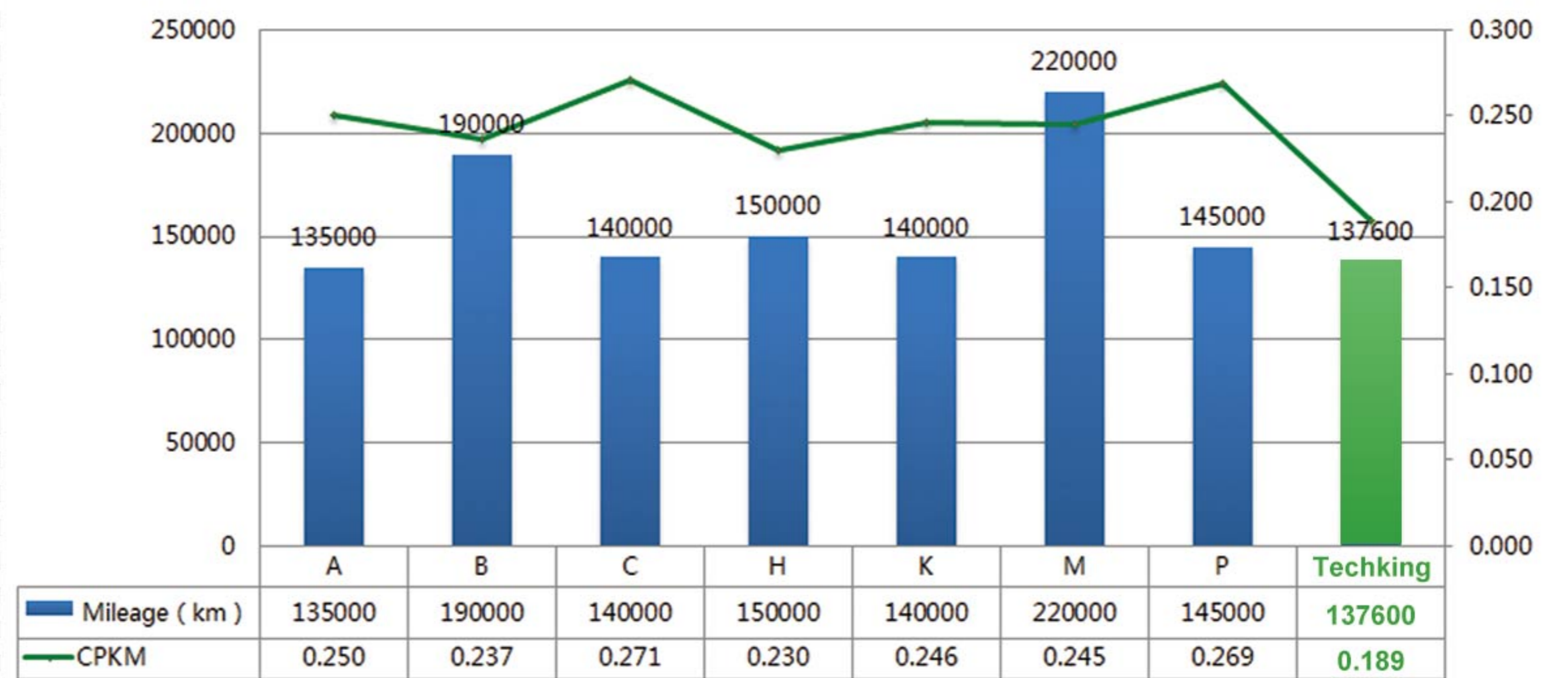
General Information	
Vehicle Brand	Benz
Vehicle Model	2DDTTT
Tire Size & Pattern	315/80R22.5 TKAM II
Wheel Position	All Position
Tread	
Original Tread Depth	17 mm
Average Remaining Tread Depth	14 mm
Tread Wear Depth	3 mm
Working Condition	
Current Mileage	24,000 km, Still running
Projected Mileage	116,000 km
Installation Time	
Current Working Time	3 Months
Projected Tire Life	14 Months



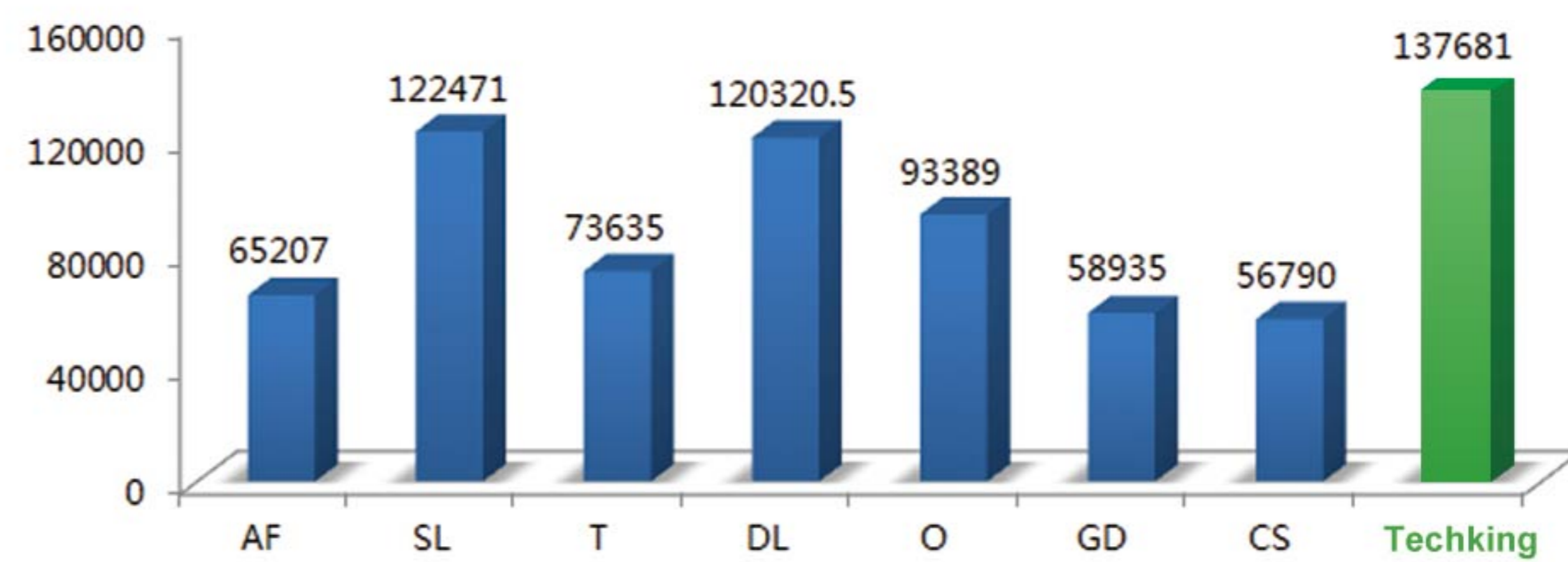
- ☆ **Max. Speed : 60~80km/h**  
One-way distance : 500km~800km  
Road Condition: 60% on road, 40% off road

- ☆ **After 3 months running, the current mileage of 315/80R22.5 TKAM II is 24,000km, the projected mileage will be 116,000 km.**

**Tracking for 1<sup>st</sup> tire life with lower CPKM**



**Total mileage comparison**



Comparing with different brands from China, Techking 315/80R22.5 TKAM II provides the highest mileage than other brands.

Size	PR	Tread Depth (mm)	LI & SS	Load Capacity		Max. Load Capacity (kg)	Standard Pressure (kPa)	Type
				Single	Dual			
12.00R20	20	16	156/153K	4000	3650	3650	900	TT
12.00R24	20	14.5	160/157K	4500	4125	4125	900	TT
11R22.5	18	17	148/145L	3150	2900	2900	850	TL
12R22.5	18	17	152/149L	3550	3250	3250	930	TL
13R22.5	18	17	156/150K (154/150L)	4000	3350	3350	830	TL
295/80R22.5	18	16	152/149M	3550	3250	3250	850	TL
315/80R22.5	20	17	156/153K	4000	3650	3650	900	TL